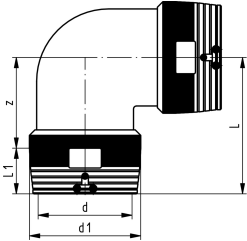




## Отвод 90° электросварной d200-d250

- Полиэтилен 100 SDR11
- Давление для газа 10 бар / воды 16 бар
- Штыревой контакт 4 мм
- Индикатор сварки
- Две зоны сварки



d (mm)	code	SP	weight (kg)	d1 (mm)	L (mm)	L1 (mm)	z (mm)
200	<b>753 101 819</b>	1	9,320	250	298	104	194
225	<b>753 101 820</b>	1	13,220	280	318	112	206
250	<b>753 101 821</b>	1	16,600	310	347	123	224

The technical data are not binding. They neither constitute expressly warranted characteristics nor guaranteed properties nor a guaranteed durability. They are subject to modification. Our General Terms of Sale apply.

Georg Fischer Piping Systems Ltd, Postfach, CH-8201 Schaffhausen/Switzerland

Phone +41 -(0)52-631 1111

e-mail: [info.ps@georgfischer.com](mailto:info.ps@georgfischer.com)

Internet: <http://www.gfps.com>